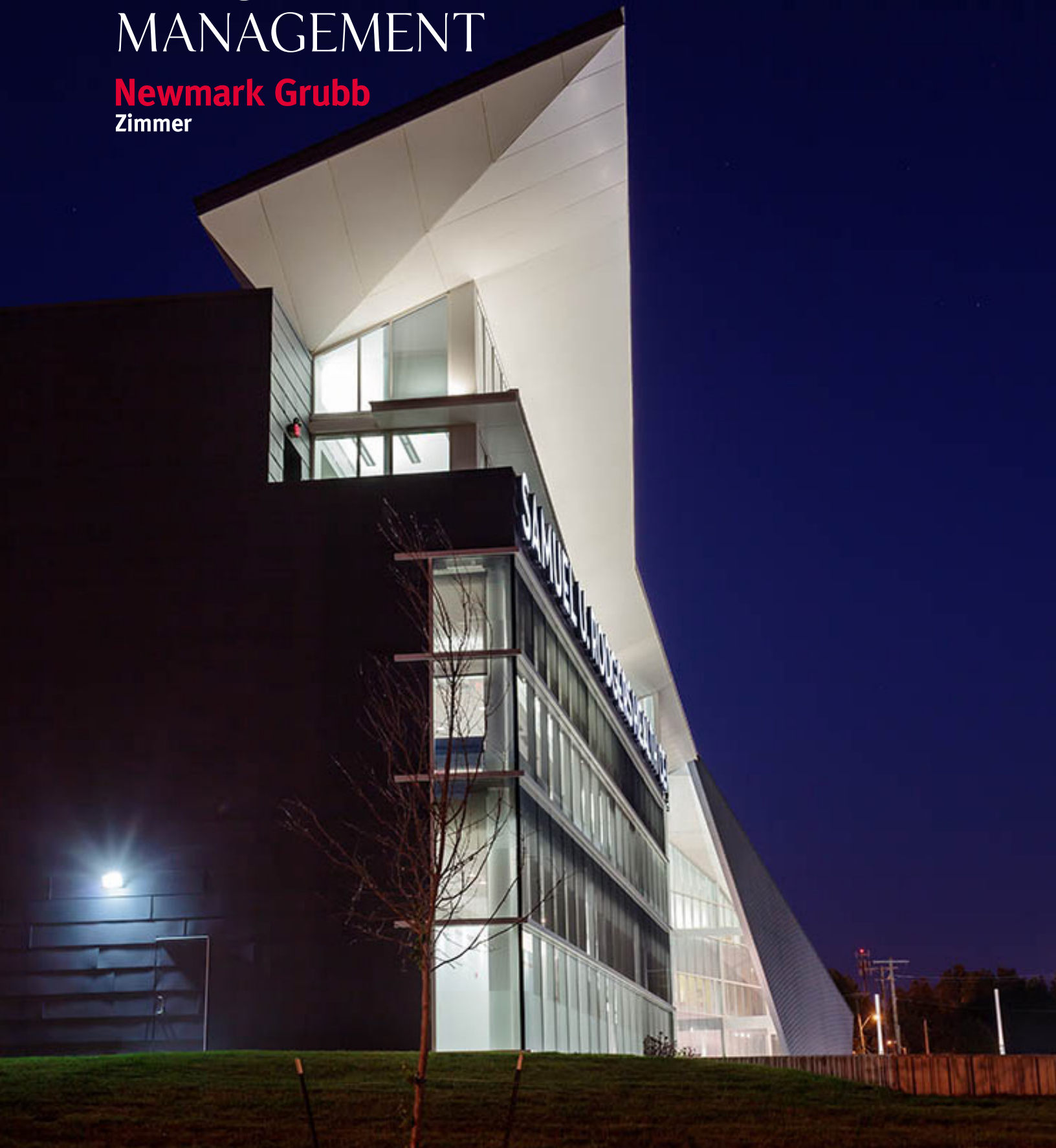




DEVELOPMENT MANAGEMENT

Newmark Grubb
Zimmer



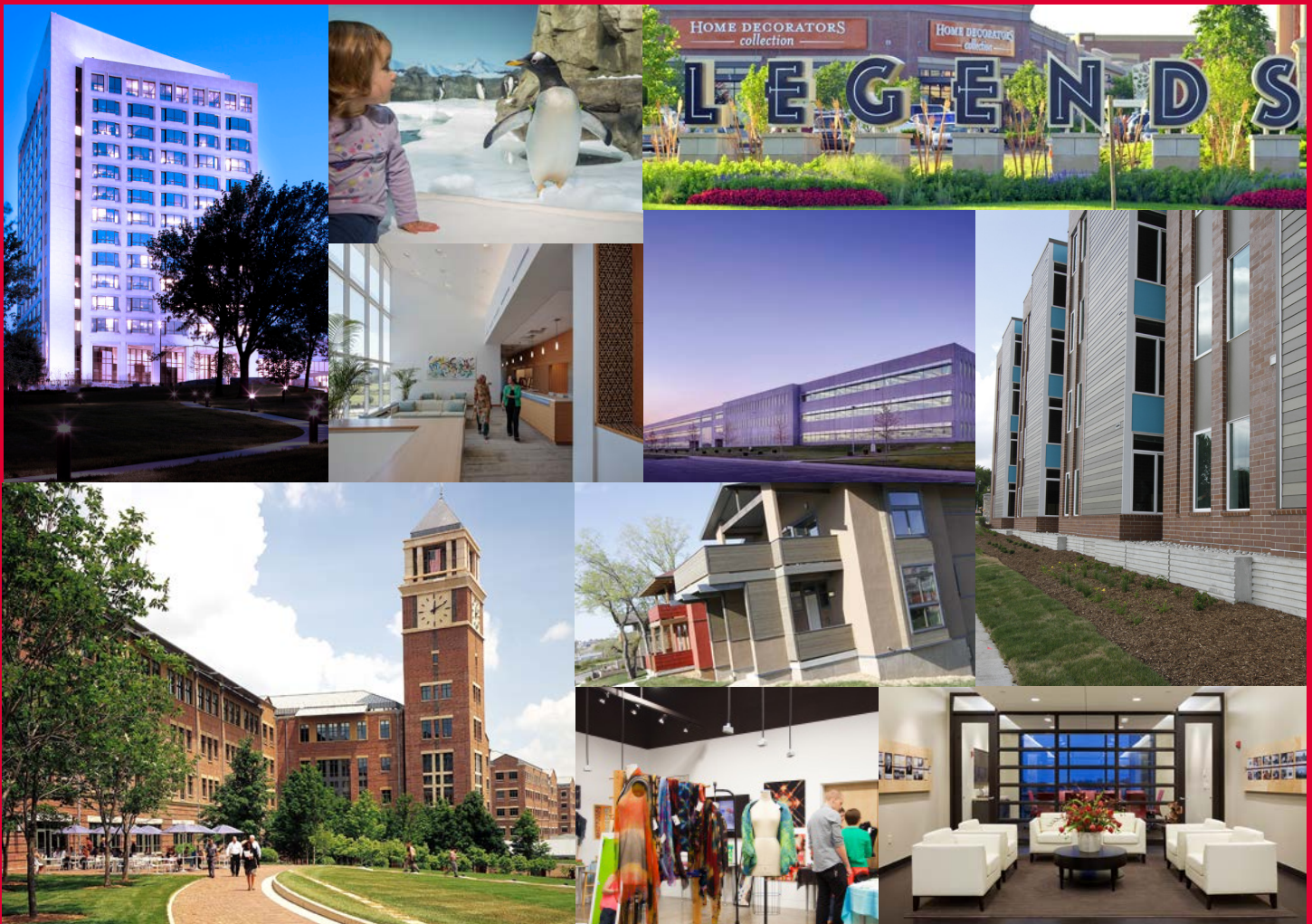
MANAGING PROJECT RISK.

Newmark Grubb Zimmer (NGZ) provides comprehensive development management services to private- and public-sector clients in the greater Kansas City area. Managing more than \$150 million of construction during each of the past five years, our team can reduce your development risk, serve as an extension of your staff and provide specialized local expertise to insure the success of your project. Our particular expertise is managing public/private partnerships.

Real estate development represents a significant investment of time, resources and capital, and involves a complex process with a multitude of decisions that require experience, judgment, specialized knowledge of design and construction, and market familiarity. NGZ's Development Management Group has the experience and expertise to successfully implement every aspect of a development project from team selection, and securing public approvals, to managing the

design and construction process, MBE/WBE participation and successful move-in and occupancy.

NGZ combines more than 67 years and 30,000,000 square feet of development experience with state-of-the-art project management tools and a passion for real estate development, to provide high-quality, economically successful and environmentally responsible projects on time, on plan and on budget.





SERVICES DESIGNED FOR SUCCESS.

- Approvals, Zoning and Permitting
- Site Evaluation and Acquisition
- Public Incentives
- Design/Budget Review
- Procurement of Services
- Project Management
- Budgeting & Scheduling
- MBE/WBE Diversity Plans
- Loan/Pay Applications
- Contract Administration & Negotiation
- Cost Report and Project Accounting
- Feasibility/Market Analysis
- Commissioning and Occupancy
- Economic Development Analysis & Planning
- Master Developer Services
- Sustainable Development
- Build to Suit
- Public/Private Partnerships
- Public Sector Consulting

Meet the Team

Daniel F. Musser

Senior Vice President-Principal,
Director of Development Management
dmusser@ngzimmer.com

Kirk B. Sherman, LEED AP

Vice President-Principal
ksherman@ngzimmer.com

Dr. Troy L. Nash

Vice President-Principal,
Director of Public Sector Consulting
tnash@ngzimmer.com

Alana Litman

Project Manager
alitman@ngzimmer.com

Selected Experience

- NNSA/National Security Campus
- Sprint World Headquarters Campus
- Village West Tourism & Entertainment District
- Federal Reserve Bank-Kansas City
- Samuel U. Rogers Healthcenter
- Kansas City Hospice
- College Basketball Experience/ NABC Hall of Fame
- BKD Headquarters
- Midwest Public Risk Headquarters
- Southlake Technology Park
- Historic NY Life Building
- Millburn Golf & Country Club
- Kansas City Zoo (Penguin Plaza Exhibit, Tuxedo Grill, Orangutan Exhibit)
- Church of the Nazarene Global Ministry Center
- Beacon Hill Neighborhood Redevelopment
- Columbus Park Neighborhood Mixed-use Project
- TMC Behavioral Health Facility
- Flamingo Hotel & Casino
- Savoy Hotel
- Lenexa Industrial Park

About Newmark Grubb Zimmer

Newmark Grubb Zimmer (NGZ), a full service commercial real estate company, provides a range of services including sales and leasing, property and facility management, global corporate services, owner's representative services for public and private development projects, and public sector consulting, as well as various real estate consulting services.

NGZ is regularly recognized as one of the top brokerage firms in the region, negotiating more than 450 transactions per year. The firm currently manages more than 7.1 million square feet of office, medical, industrial, retail and educational property and serves as corporate real estate advisor for an assortment of local, regional, national

and international companies.

NGZ has been responsible for some of the most iconic developments in the Midwest region including the NNSA National Security Campus, Sprint World Headquarters Campus and the Village West tourism, entertainment and retail district — each valued at \$1 billion or more.



Kansas City, Missouri

1220 Washington Street
Suite 300
Kansas City, MO 64105
816.474.2000

St. Louis, Missouri

8235 Forsyth Boulevard
Suite 310
Clayton, MO 63105
314.254.4600

Eastern Jackson County, Missouri

1485 SW Market Street
Lee's Summit, MO 64081
816.474.2000

Salina, Kansas

P.O. Box 3224
Salina, KS 67402
785.342.9106

North America

Canada
Mexico
United States

Europe

Austria
Belgium
Czech Republic
France
Germany
Ireland
Italy
Netherlands
Poland
Portugal
Romania
Russia
Spain
Switzerland
United Kingdom

South America

Argentina
Brazil
Chile
Colombia
Peru

Asia-Pacific

Australia
Cambodia
China
Hong Kong
India
Indonesia
Japan
Malaysia
New Zealand
Singapore
South Korea
Taiwan
Thailand
Vietnam

Africa

Botswana
Kenya
Malawi
Nigeria
South Africa
Tanzania
Uganda
Zambia
Zimbabwe

Middle East

Bahrain
Qatar
United Arab Emirates



Please recycle,
whenever possible
Sustainably
Newmark Grubb Knight Frank